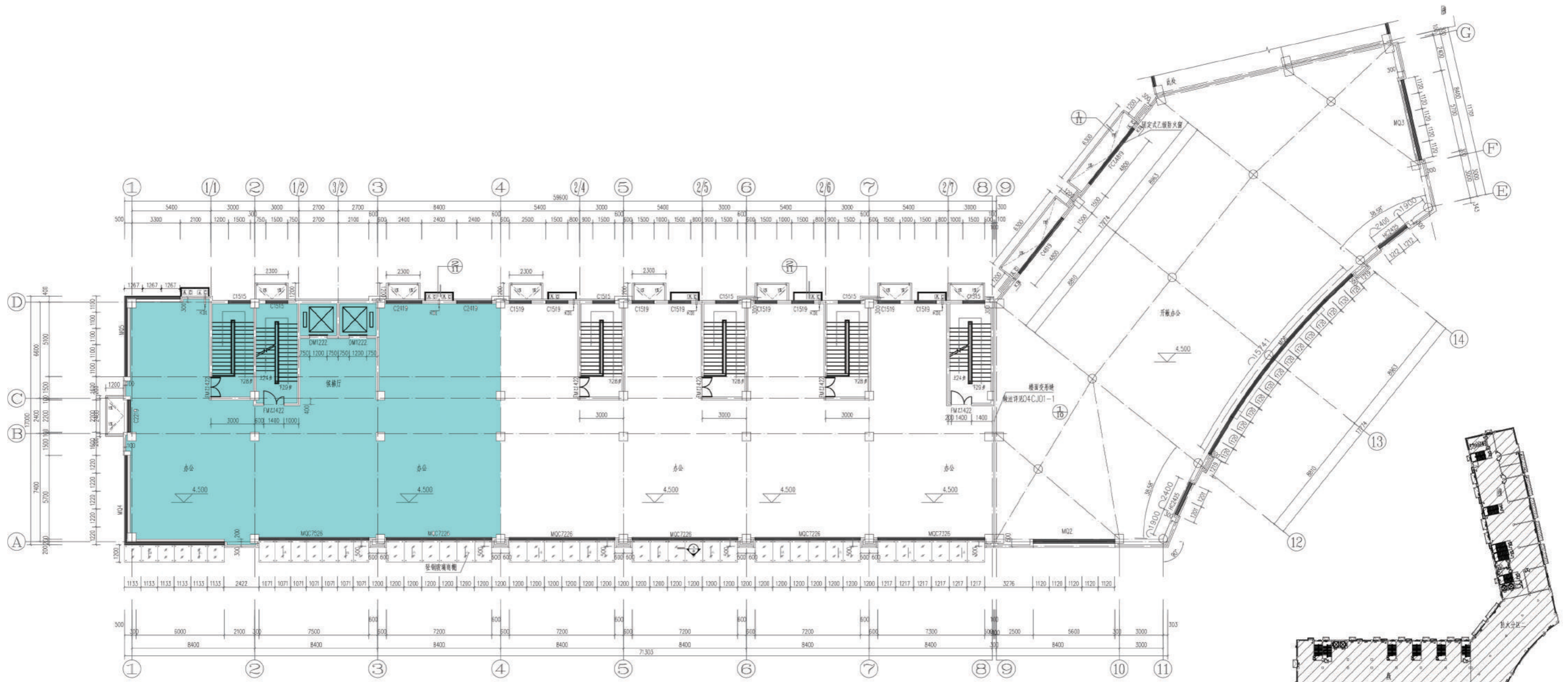
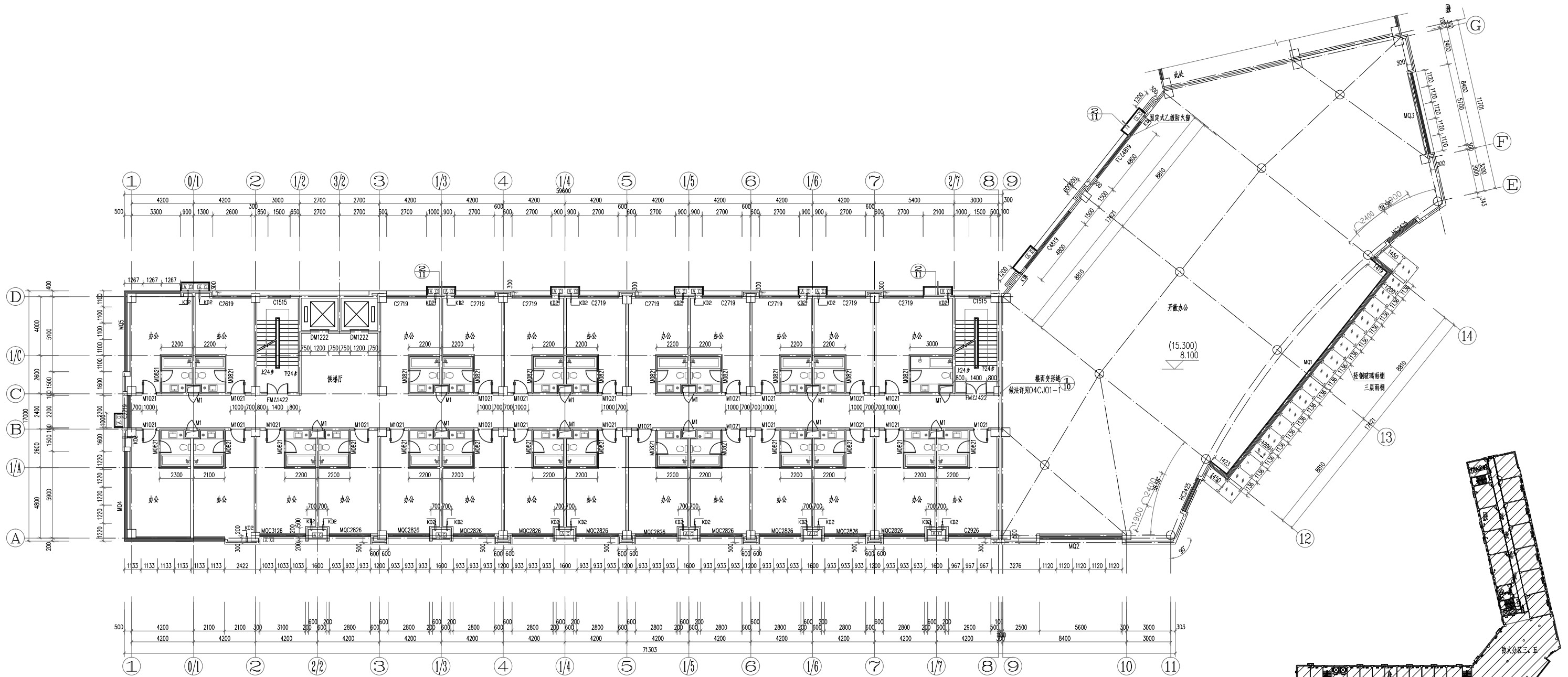


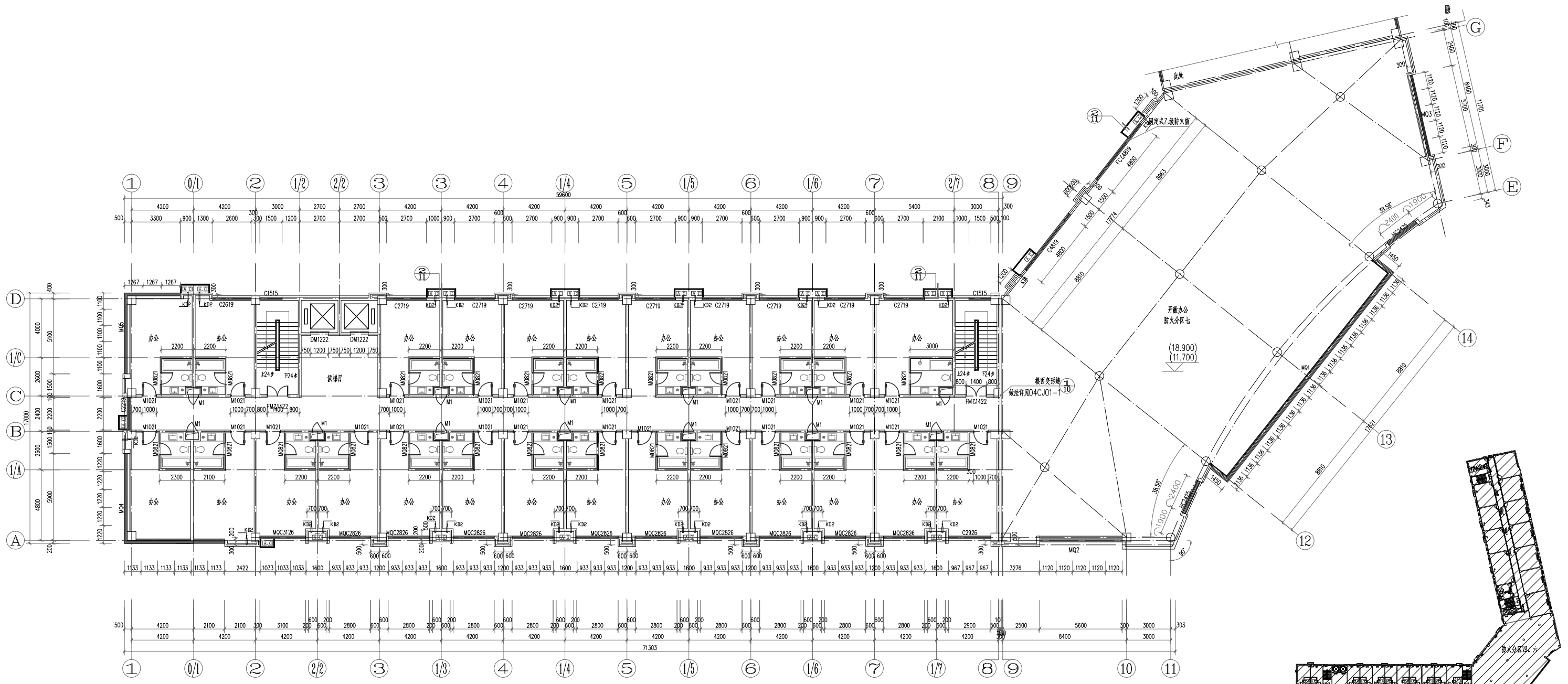
一层平面图



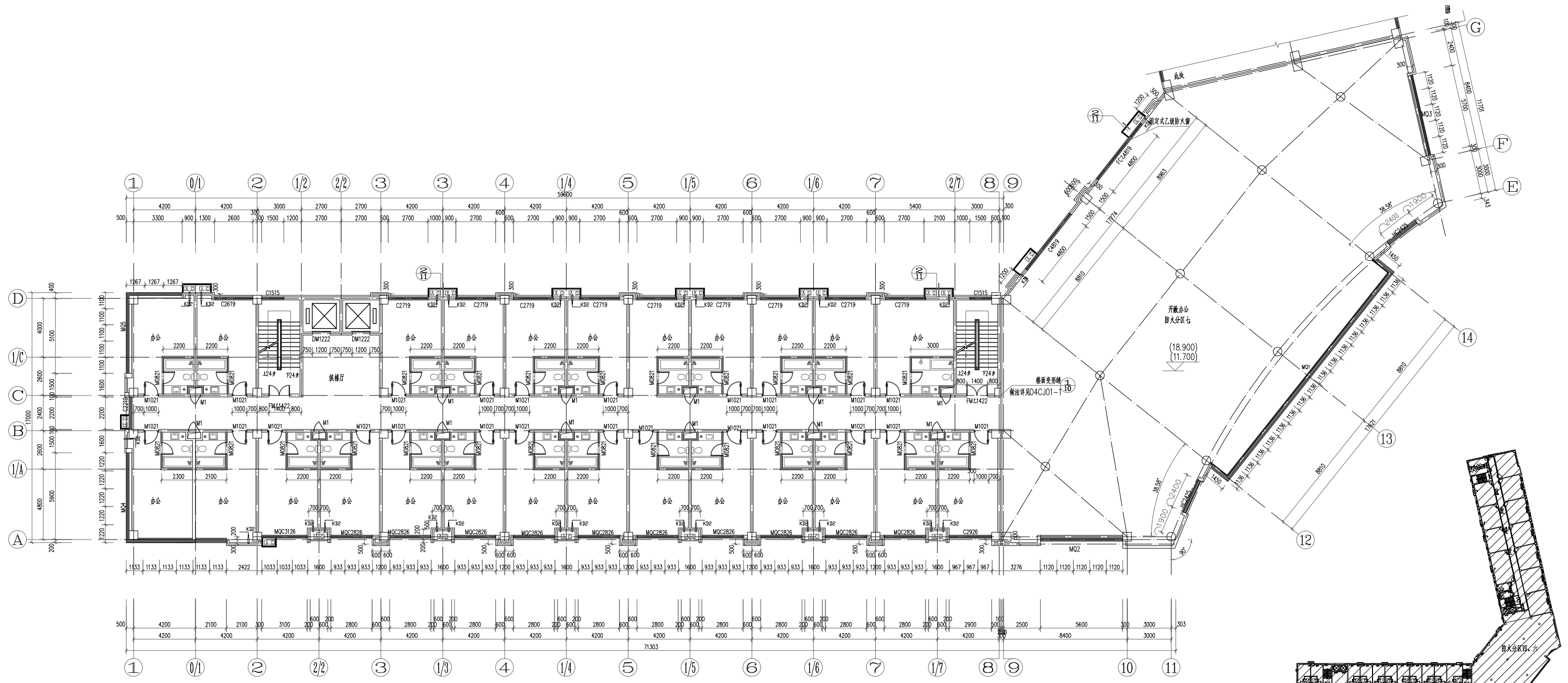
二层平面图



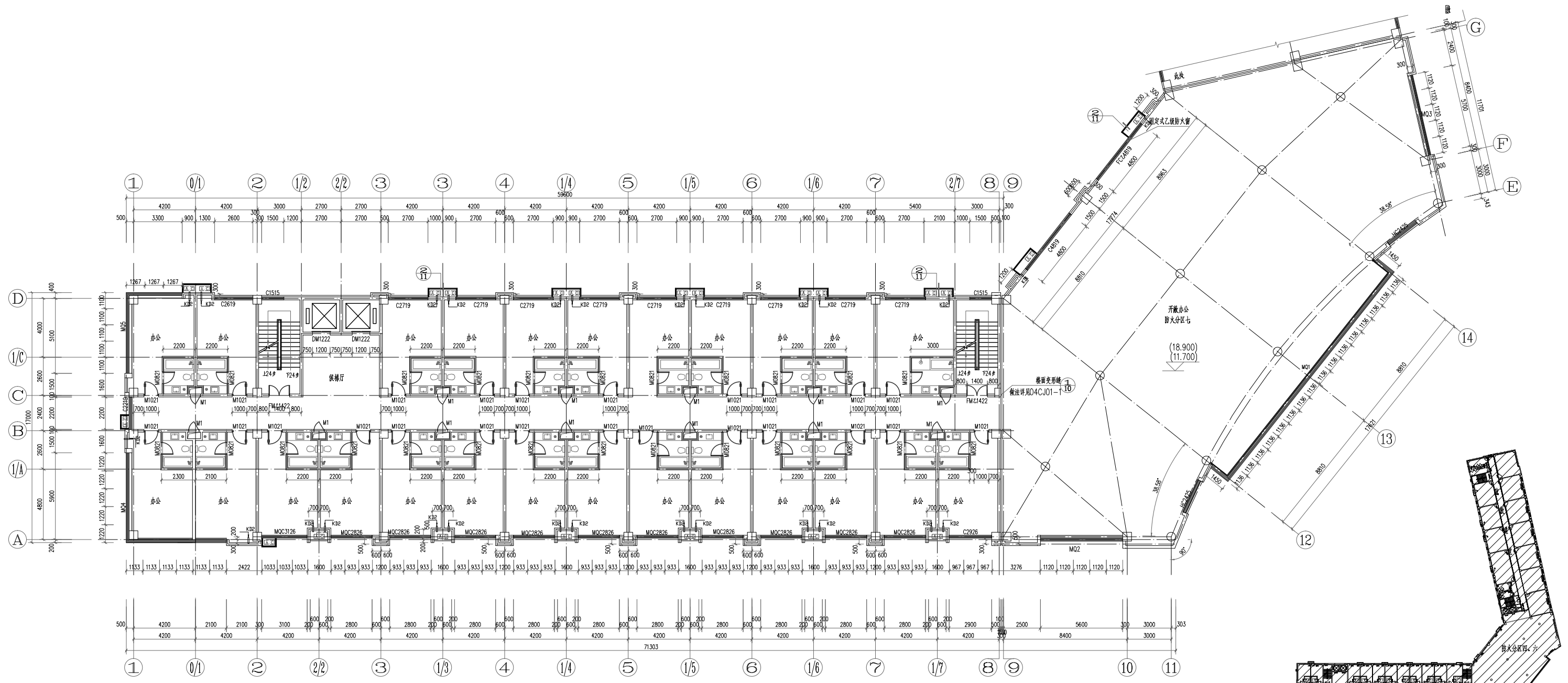
三层平面图



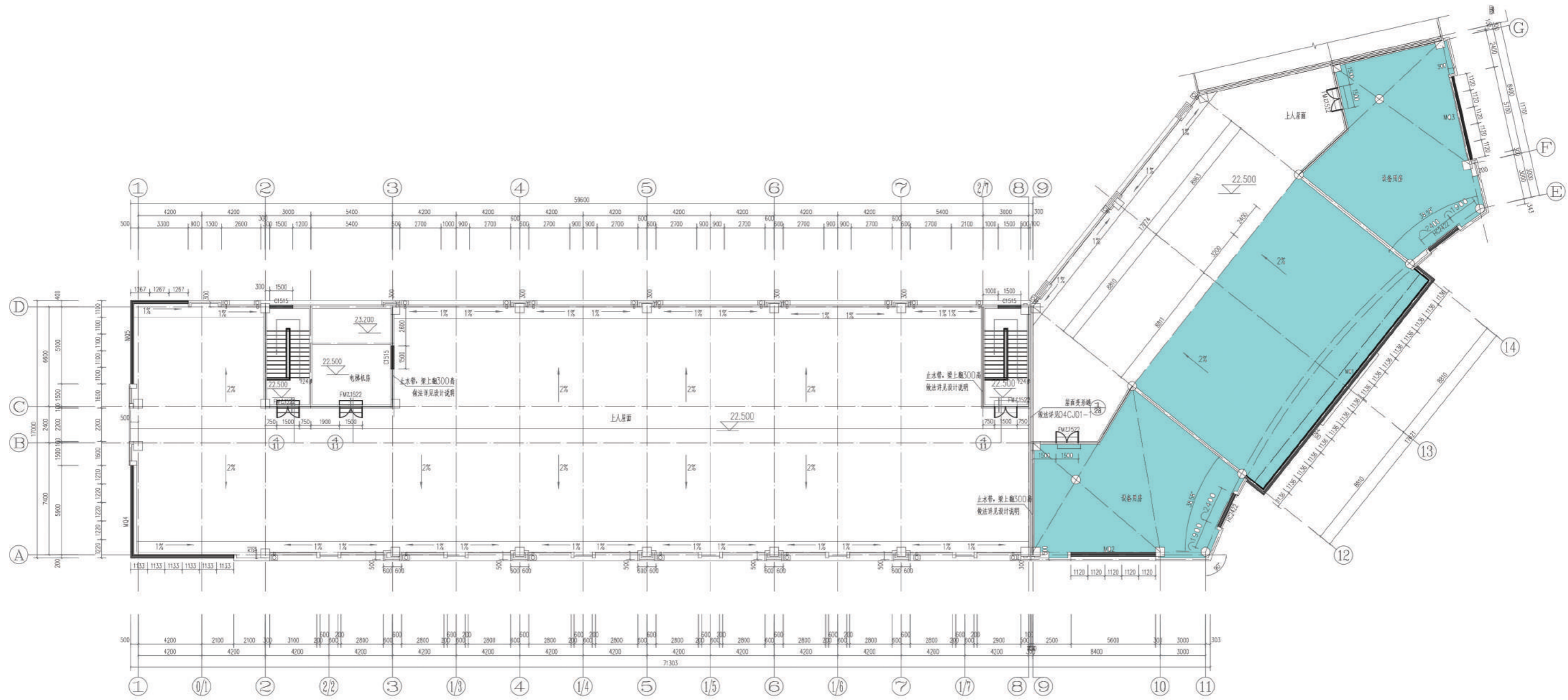
四层平面图



五层平面图

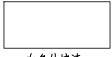

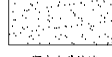
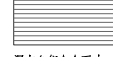



六层平面图

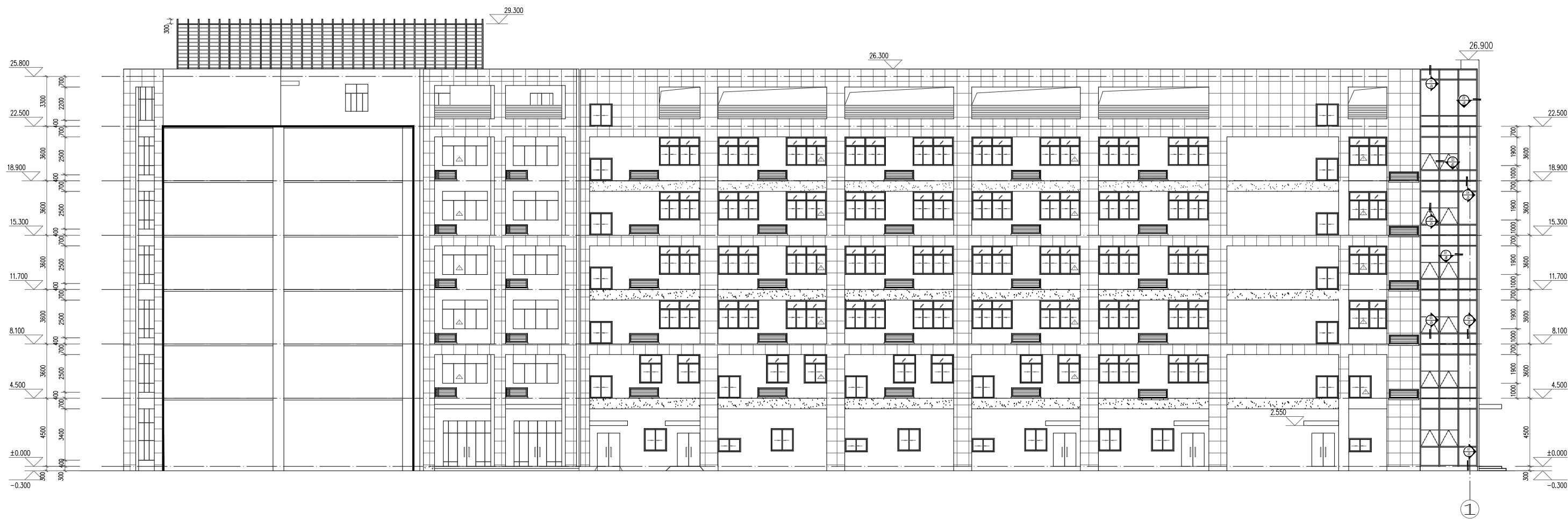



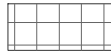
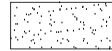


顶层平面图



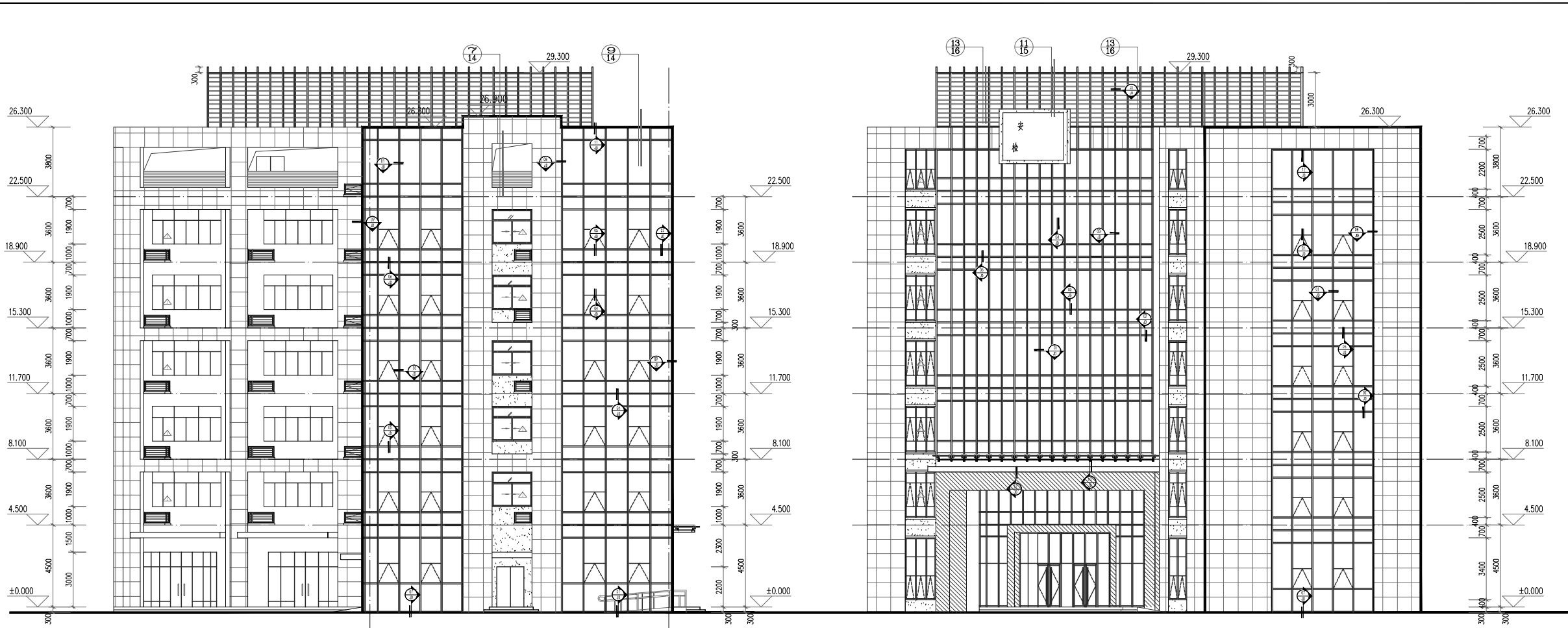
- 
 白色外墙漆
- 
 浅灰色真石漆勾缝500*500
施工前由设计确认
- 
 深灰色外墙漆
- 
 深灰色铝合金百叶
- 
 朱红色真石漆

南立面图



- 
 白色外墙漆
- 
 浅灰色真石漆勾缝500*500
施工面由设计确认
- 
 深灰色外墙漆
- 
 深灰色铝合金百叶
- 
 朱红色真石漆

北立面图



门窗表

类型	设计编号	洞口尺寸(mm)	数量	图集名称	页次	通用型号	备注	
乙级防火门	FMJ1522	1500X2200	21	12,4609	36	MIFM	乙级防火门	
乙级防火门	FMJ1021	1000X2100	4	12,4609	36	MIFM	乙级防火门	
丙级防火门	M1	700X1800	52	12,4609	73	MIFM	丙级防火门门框高度减300mm	
普通门	M0821	800X2100	105	06,4607-1	18	5	防火门	
	M1021	1000X2100	92	06,4607-1	18	5	防火门	
	M1521	1500X2100	7	06,4607-1	18	5	防火门	
	M1522	1500X2200	1	06,4607-1	18	5	防火门	
	M1822	1800X2200	1	06,4607-1	18	5	防火门	
甲级防火门	FMJ1521	1500X2100	6	12,4609	36	MIFM	甲级防火门	
甲级防火门	FMJ1422	1400X2200	4	12,4609	36	MIFM	乙级防火门	
普通窗	C1509	1500X900	4	06,4607-1	28	A系列-90系列	中空玻璃幕墙, 深灰色镀膜钢化中空玻璃 玻璃厚度按0.3米, 其余按台位高度控制	
	C1515	1500X1500	22	06,4607-1	28	A系列-90系列		
	C1519	1500X1900	8	06,4607-1	28	A系列-90系列		
	C2219	2200X1900	5	06,4607-1	28	A系列-90系列		
	C2415	2400X1500	2	06,4607-1	28	A系列-90系列		
	C2419	2400X1900	2	06,4607-1	28	A系列-90系列		
	C2619	2600X1900	4	06,4607-1	28	A系列-90系列		
	C2719	2700X1900	36	06,4607-1	28	A系列-90系列		
	C2926	2900X2600	4	06,4607-1	28	A系列-90系列		
	C4819	4800X1900	10	06,4607-1	28	A系列-90系列		
	MOC2826	2800X2600	40	6Low-E+12A+6中空钢化玻璃				幕墙窗 窗台高度按0.3米, 详见立面图
	MOC3126	3100X2600	4	6Low-E+12A+6中空钢化玻璃				
	MOC7226	7200X2600	4	6Low-E+12A+6中空钢化玻璃				
	MOC7326	7300X2600	1	6Low-E+12A+6中空钢化玻璃				
MOC7526	7500X2600	1	6Low-E+12A+6中空钢化玻璃			幕墙窗 窗台高度按0.3米, 详见立面图		
HC2422	2400X2200	2	6Low-E+12A+6中空钢化玻璃					
HC2425	2400X2500	10	6Low-E+12A+6中空钢化玻璃					
HC2434	2400X3400	2	6Low-E+12A+6中空钢化玻璃					

